

The 1140mm Series

The 1140mm series is our largest diameter container with volumes from 150 gallons to 450 gallons. Designed for shipping, storing, and processing liquids and viscous products up to 800,000 centipods. A variety of filling and dispensing options are available.

Features at a glance:

- Seamless sanitary cylindrical design
- 304 or 316 stainless steel
- UN approved designs to 15 psi working pressure
- ASME designs optional
- Top or bottom fill and dispense options
- Laser welded heating/cooling jackets optional



Sharpsville Container is known for high quality fabrication in stainless steel and exotic alloys. Our vessels, whether they are process or transport, ASME, UN, or Heat Transfer are manufactured for the Food, Chemical, Beverage, Petro-Chemical and Pharmaceutical markets. The size of vessels that we manufacture range from 1 gallon to 25,000 gallons. With our standard line and custom design expertise, we are capable of meeting or exceeding your fabrication requirements. Our reputation for quality and service continues to exceed our customers' expectations.



ISO 9001 Certified

600 Main Street
Sharpsville, PA 16150
office: 724-962-1100
fax: 724-962-1226

email: Sales@scacon.com
www.sharpsvillecontainer.com

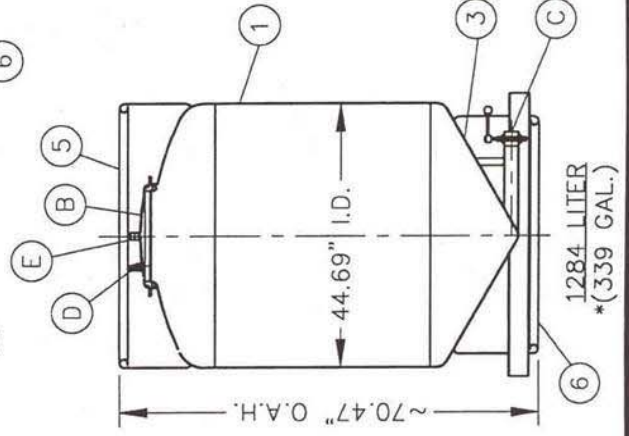
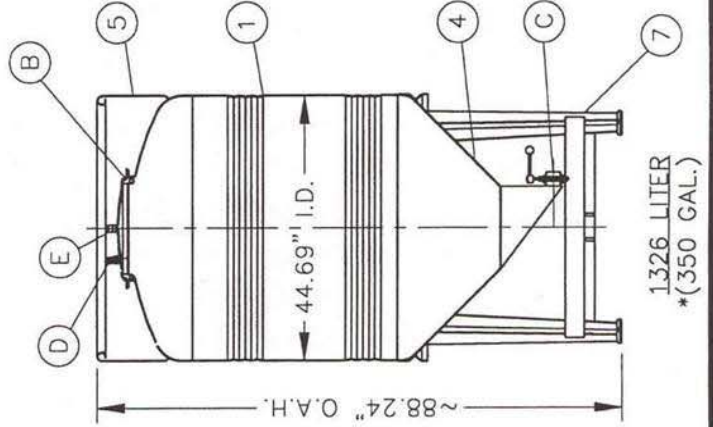
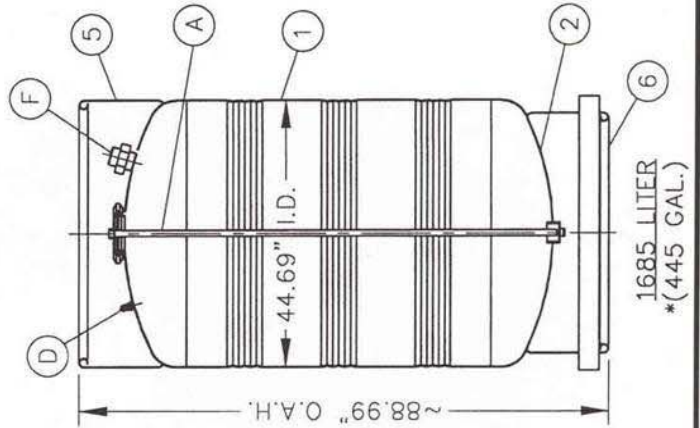
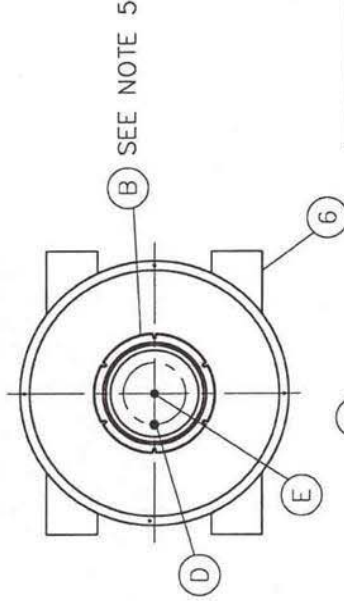
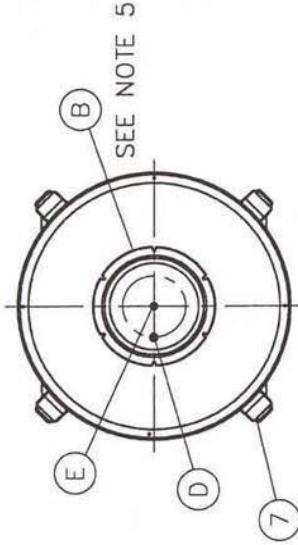
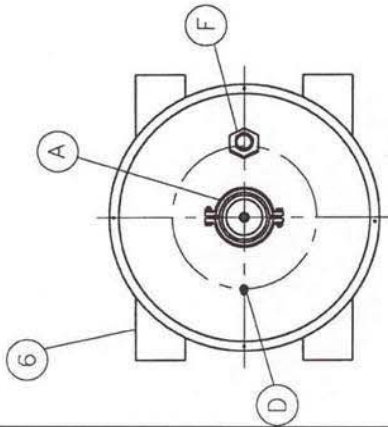


BILL OF MATERIAL

ITEM	DESCRIPTION	QTY	MATERIAL
1	1140mm BODY	1	304 SS
2	1140mm DOME	1	304 SS
3	1140mm 30° CONE	1	304 SS
4	1140mm 45° CONE	1	304 SS
5	TOP SKIRT	1	304 SS
6	FORK LIFT BASE	1	304 SS
7	LEG BASE ASSEMBLY	1	304 SS

NOZZLE SCHEDULE

ITEM	DESCRIPTION	QTY	MATERIAL
A	6" TRI CLAMP ASSEMBLY W/ DOWNTUBE	1	304 SS
B	16" MANWAY COLLAR AND LID	1	304 SS
C	3" BUTTERFLY VALVE	1	304 SS
D	QUICK DISCONNECT	1	304 SS
E	PRESSURE RELIEF DEVICE	1	304 SS
F	BURST DISC ASSEMBLY	1	304 SS



SHARPSVILLE
CONTAINER
www.sharpsvillecontainer.com

1140mm CONTAINER

FEATURES:

- 1.) DESIGN PRESSURE @ 14.9 PSIG
- 2.) STACKABLE 2 HIGH
- 3.) FITTINGS NOT TO PROTRUDE FROM TOP SKIRT PLANE AND OUTSIDE
- 4.) #2B PICKLED FINISH INSIDE
- 5.) VARIOUS MANWAY LID COMPONENTS OPTIONAL
- *6.) BRIMFUL VOLUMES